



2026 Company Overview

View the Dover 2025 Annual Report



About Dover

Dover is a diversified global manufacturer and solutions provider with annual revenue of over \$8 billion. We deliver innovative equipment and components, consumable supplies, aftermarket parts, software and digital solutions, and support services through five operating segments: Engineered Products, Clean Energy & Fueling, Imaging & Identification, Pumps & Process Solutions and Climate & Sustainability Technologies. Dover combines global scale with operational agility to lead the markets we serve. Recognized for our entrepreneurial approach for over 70 years, our team of approximately 24,000 employees takes an ownership mindset, collaborating with customers to redefine what's possible. Headquartered in Downers Grove, Illinois, Dover trades on the New York Stock Exchange under "DOV." Additional information is available at [dovercorporation.com](https://www.dovercorporation.com).

Financial Highlights

**\$8.1
Billion**
2025 Revenue

+2%
Annualized Organic
Growth 4 Years
Ended 12/31/25⁽¹⁾

\$9.61
Adjusted
2025 EPS⁽¹⁾

+7%
Annualized Growth
4 Years
Ended 12/31/25⁽¹⁾

\$1.1 Billion
2025 Free
Cash Flow⁽¹⁾

14%
Free Cash Flow
% of Revenue
in 2025⁽¹⁾

\$2.07
Dividend Per
Share in 2025

70
Consecutive
Years Of
Dividend Growth

(1) Reconciliations and definitions of non-GAAP measures are available on the Investor Relations section of our website under Annual Reports.

Engineered Products Segment

Delivering industry-leading equipment, components, and software serving the vehicle aftermarket, aerospace and defense, industrial winch and hoist, and fluid dispensing end markets. [Click to Read More](#)



Operating Companies



Enabling manufacturers to transform how they sell, build, and service industrial equipment from start to finish with AI-powered visualization software.



Providing mission-critical radio frequency filters, switches, microelectronics and signal analysis solutions for aerospace & defense, telecommunications, and space markets.



Delivering market-leading quality and innovation for benchtop soldering and dispensing solutions in electronics and industrial product assembly.



Engineering a wide range of industry-specific winches, hoists, slewing ring bearings, swing drives, electronic monitoring, and object detection systems and more for key industrial markets.



Developing the best in automotive lifting, wheel service, diagnostics and calibration, A/C service and collision repair equipment, along with the world's highest quality powertrain disconnect products.

Engineered Products



ROTARY SOLUTIONS

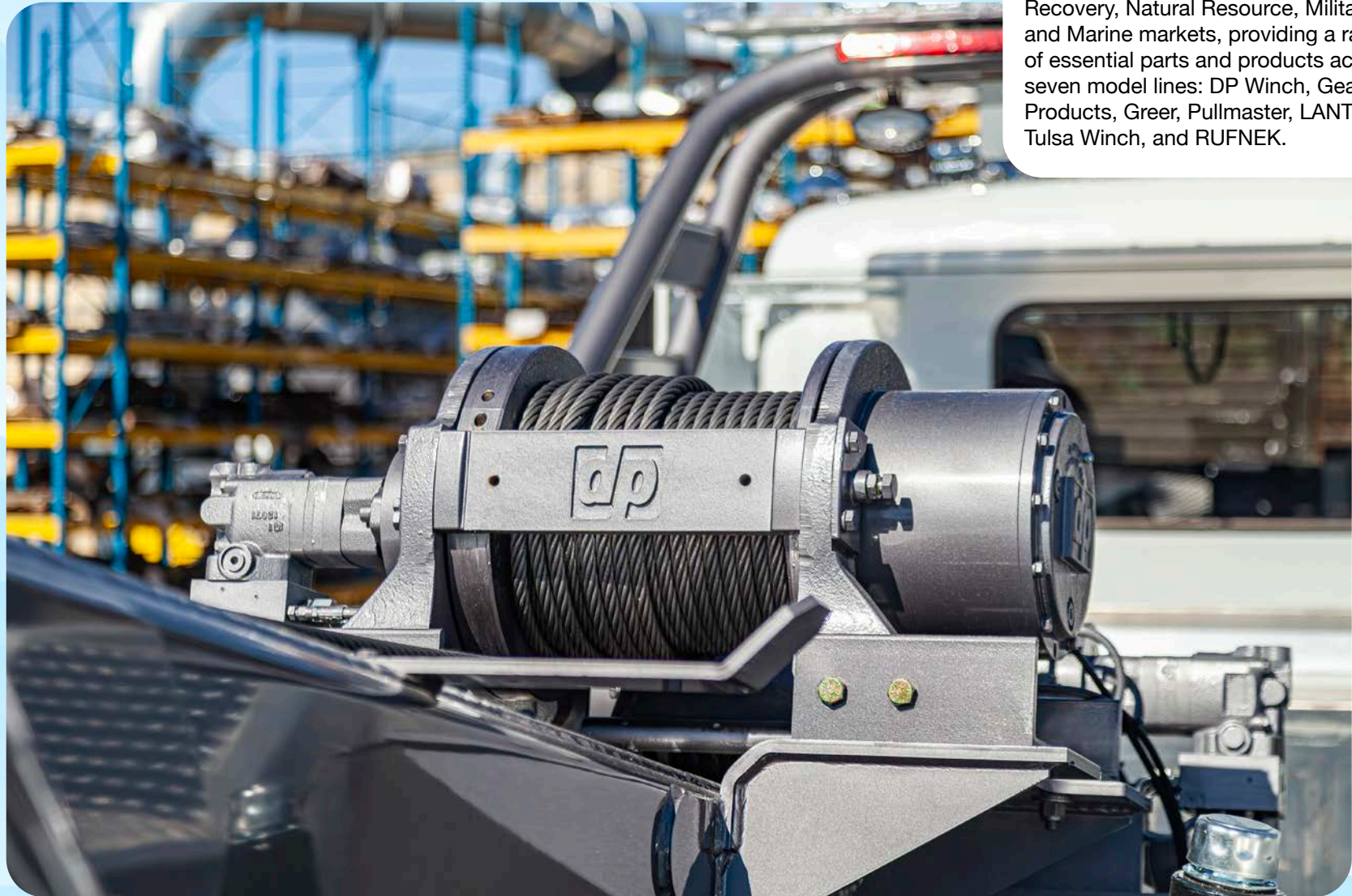
Rotary Solutions, part of Vehicle Service Group (VSG), is a global leader of vehicle lifts, wheel service and other equipment used in professional vehicle maintenance and repair shops.

Engineered Products



Microwave Products Group (MPG), delivers radio frequency (RF) spectrum-centric solutions at the speed of technology. The company enables mission-critical communications and space-based missions with ruggedized RF components, subsystems, and turnkey solutions. Civilian government, military and commercial customers rely on MPG's deep engineering expertise, and scalable manufacturing capability to deliver what they need, when they need it.

Engineered Products



TWG

TWG serves the Infrastructure, Energy, Recovery, Natural Resource, Military, and Marine markets, providing a range of essential parts and products across seven model lines: DP Winch, Gear Products, Greer, Pullmaster, LANTEC, Tulsa Winch, and RUFNEK.

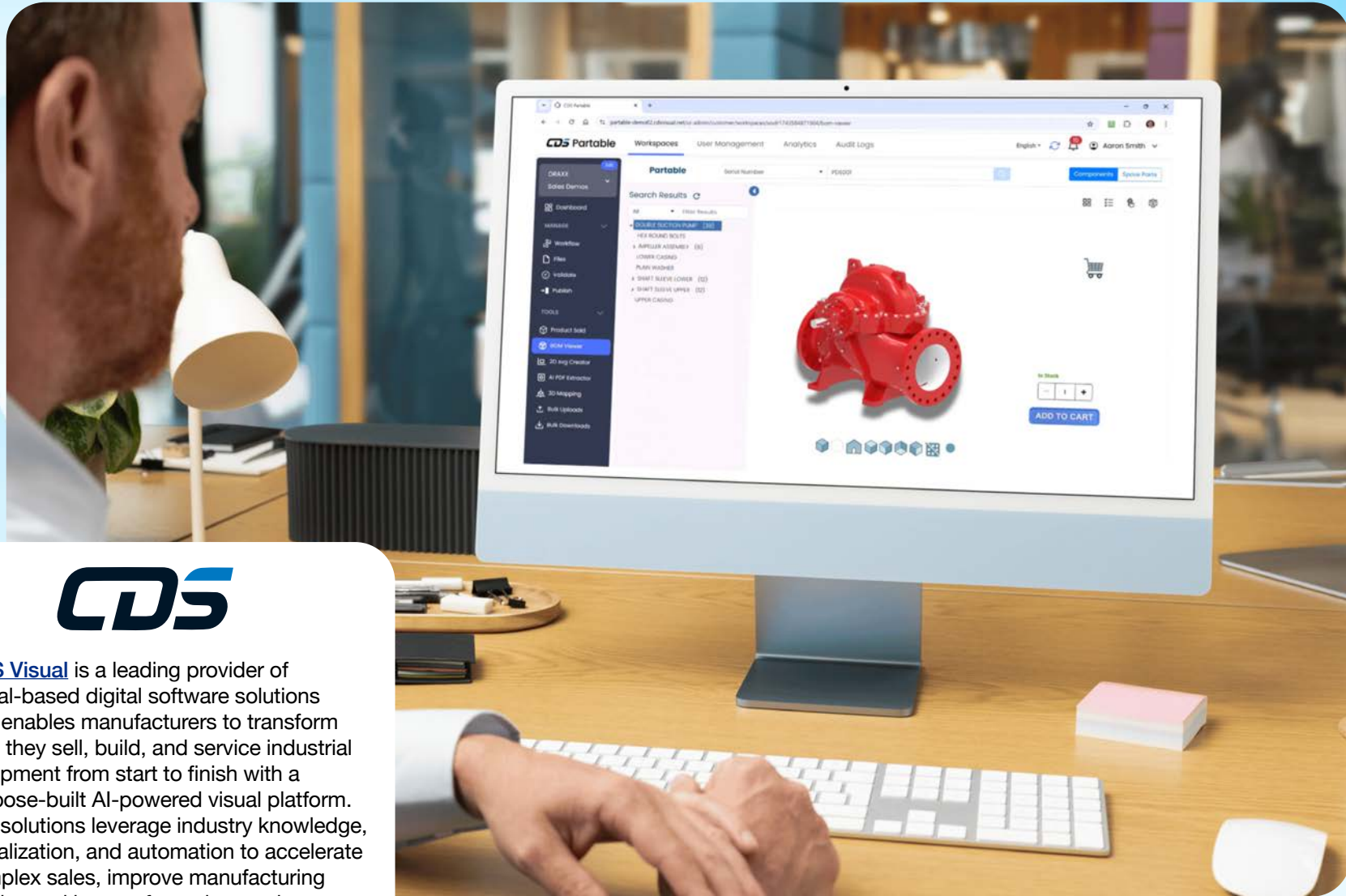
Engineered Products

OKInternational™  **TECHCON™**

Side-by-Side (SBS) Cartridges by Techcon, an OK International company, are precise metering containers for 2-component adhesives and sealants. Made of Polypropylene, SBS cartridges are essential to the automotive, construction, electronics, medical device, and industrial manufacturing sectors.



Engineered Products



[CDS Visual](#) is a leading provider of visual-based digital software solutions and enables manufacturers to transform how they sell, build, and service industrial equipment from start to finish with a purpose-built AI-powered visual platform. Our solutions leverage industry knowledge, visualization, and automation to accelerate complex sales, improve manufacturing quality, and boost after-sales service.

Clean Energy & Fueling Segment

Providing a comprehensive portfolio of safety and efficiency solutions for the convenience retail, fueling and clean energy, cryogenic gas, and vehicle wash markets. [Click to Read More](#)



Operating Companies

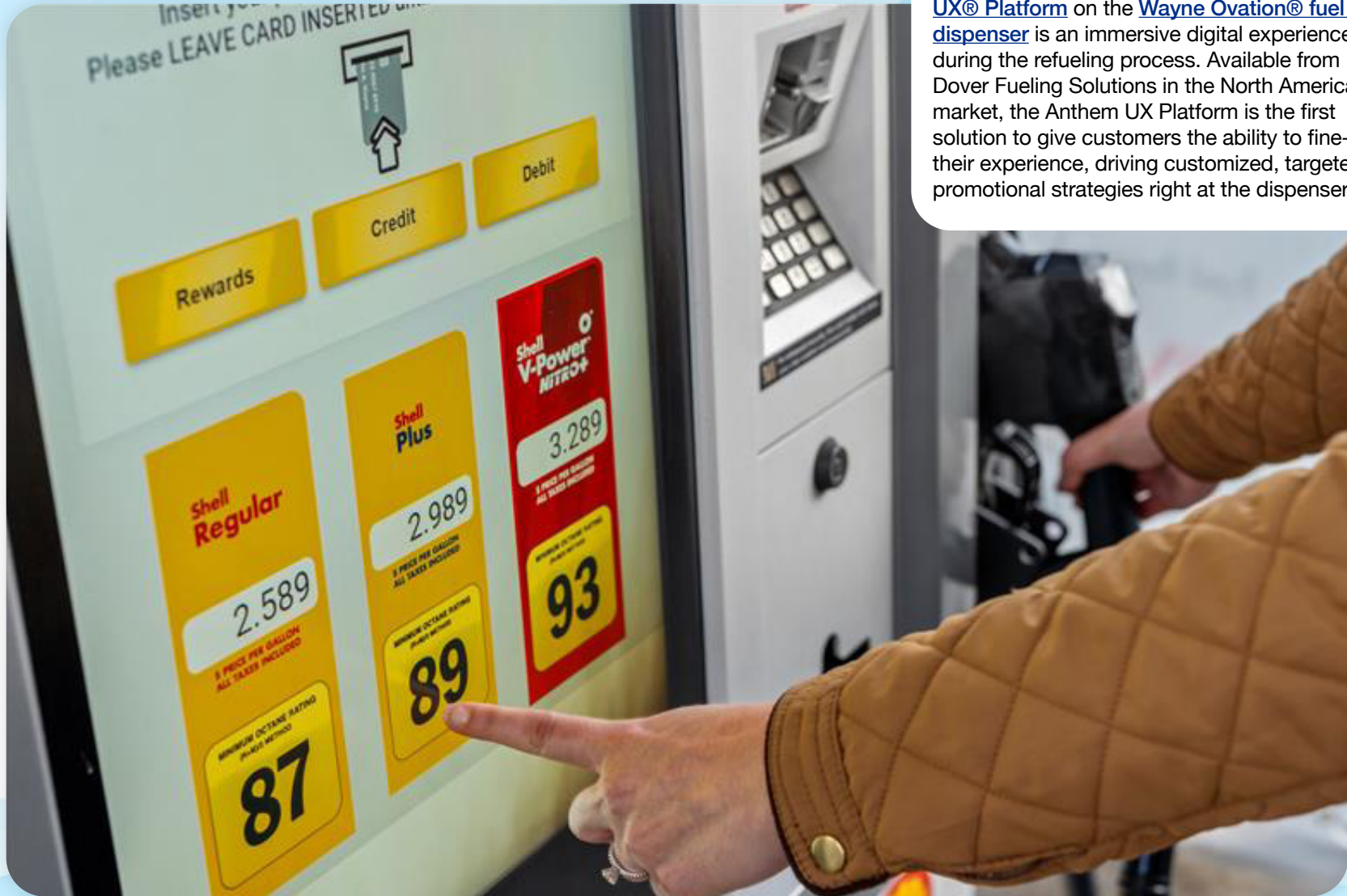


Providing advanced energy dispensing equipment, electronic automation and payment systems, automatic tank gauging, car wash, and subscription solutions to fueling and convenience retail customers worldwide.



Delivering fluid handling innovations with technologies that help make the world a cleaner, safer, and more prosperous place, every day.

Clean Energy & Fueling



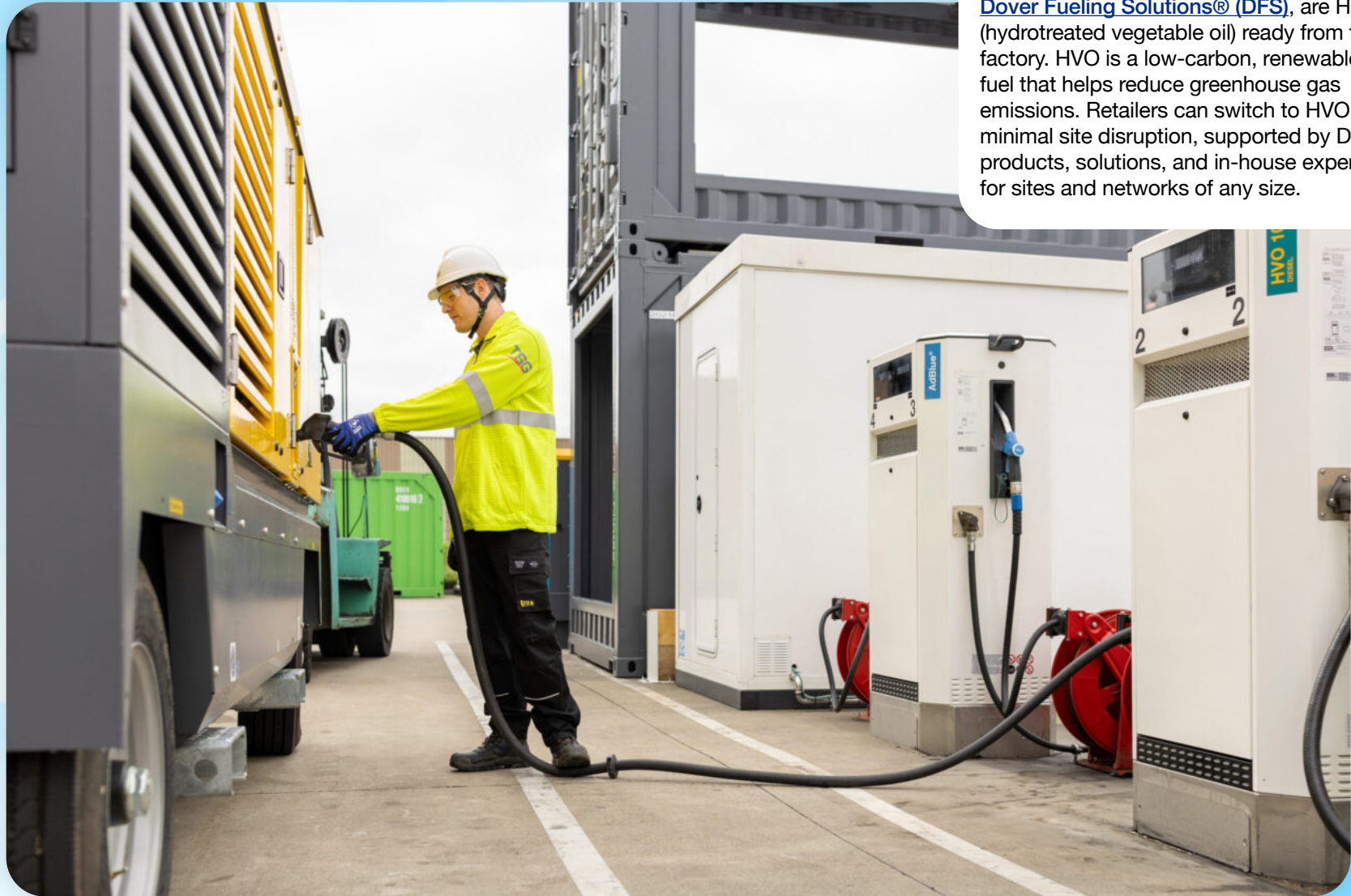
The [Dover Fueling Solutions® Anthem UX® Platform](#) on the [Wayne Ovation® fuel dispenser](#) is an immersive digital experience during the refueling process. Available from Dover Fueling Solutions in the North American market, the Anthem UX Platform is the first solution to give customers the ability to fine-tune their experience, driving customized, targeted promotional strategies right at the dispenser.

Clean Energy & Fueling



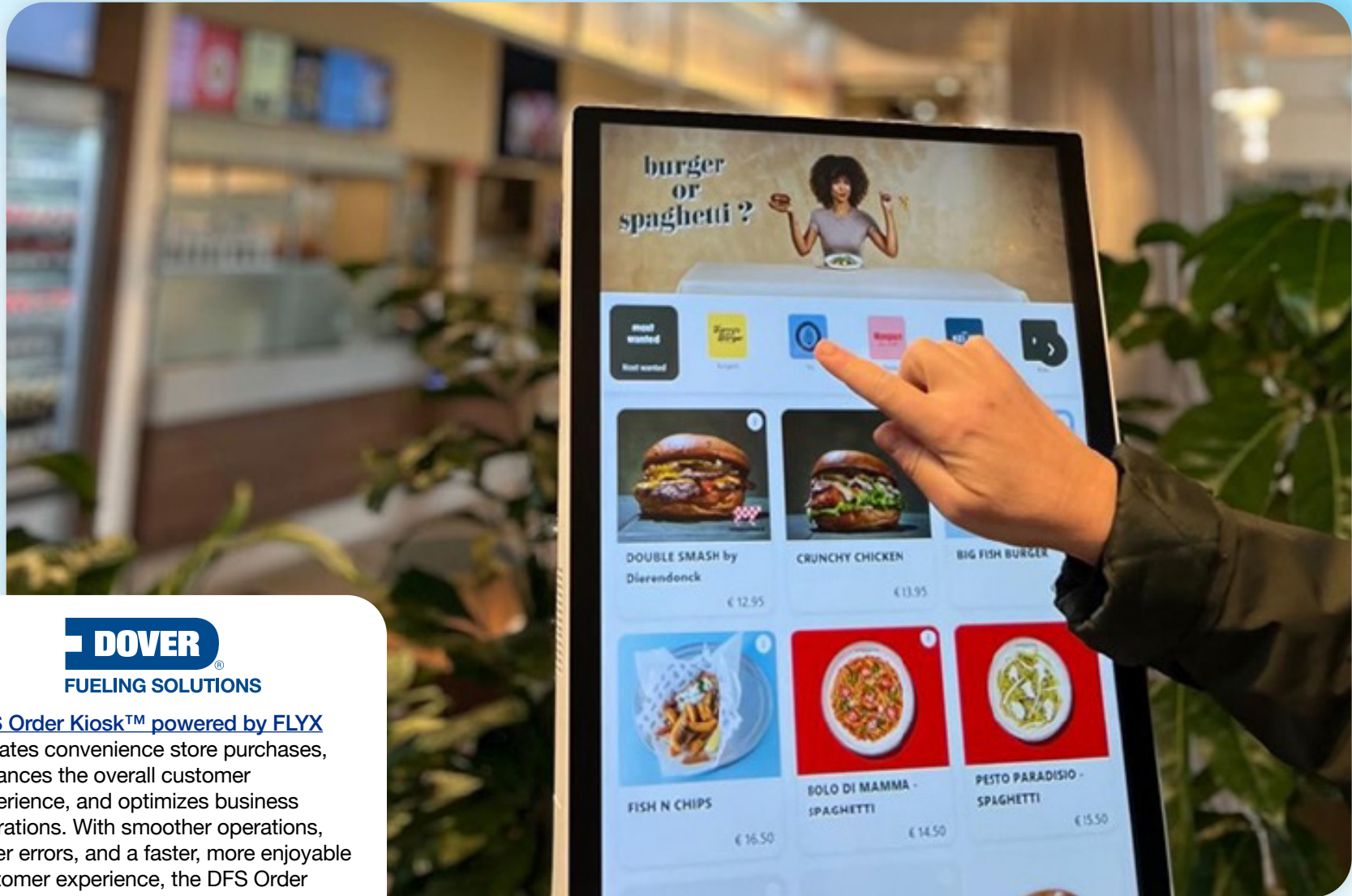
Designed and manufactured in the USA, [Wayne PWR™ EV chargers](#) combine reliability, ease of maintenance, and scalable deployment with five configurable options. Backed by [Dover Fueling Solutions' 130 years of expertise](#), Wayne PWR offers superior weather protection, vandal-proofing, UV and scratch resistance, and temperature reliability, ensuring operation even in the most extreme conditions.

Clean Energy & Fueling



Wayne® and Tokheim® dispensers from Dover Fueling Solutions® (DFS), are HVO (hydrotreated vegetable oil) ready from the factory. HVO is a low-carbon, renewable fuel that helps reduce greenhouse gas emissions. Retailers can switch to HVO with minimal site disruption, supported by DFS's products, solutions, and in-house expertise for sites and networks of any size.

Clean Energy & Fueling

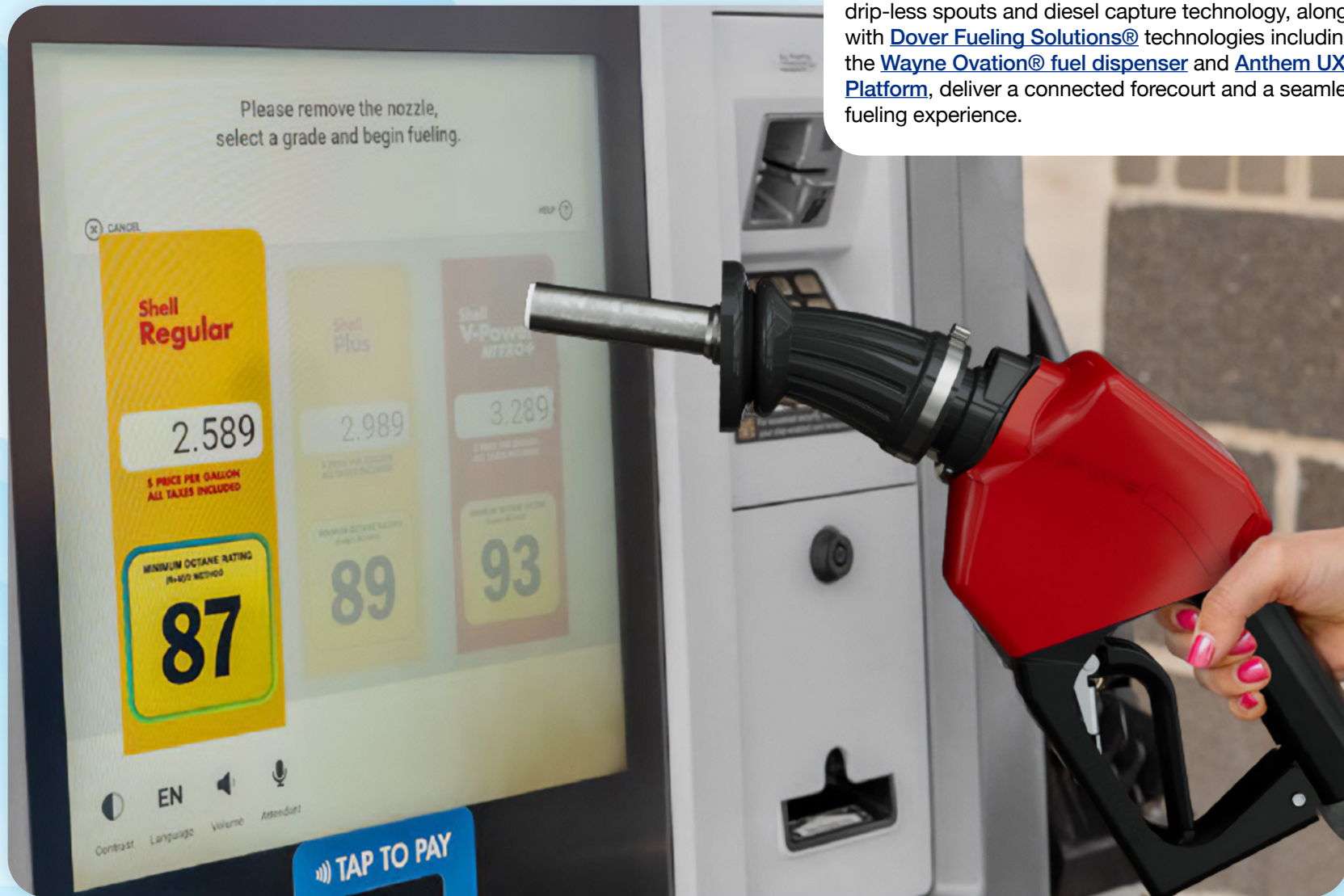


DFS Order Kiosk™ powered by FLYX elevates convenience store purchases, enhances the overall customer experience, and optimizes business operations. With smoother operations, fewer errors, and a faster, more enjoyable customer experience, the DFS Order Kiosk is redefining forecourt convenience.

Clean Energy & Fueling



[OPW Retail Fueling 14 Series nozzles](#), featuring patented drip-less spouts and diesel capture technology, along with [Dover Fueling Solutions®](#) technologies including the [Wayne Ovation® fuel dispenser](#) and [Anthem UX Platform](#), deliver a connected forecourt and a seamless fueling experience.



Clean Energy & Fueling



[OPW Clean Energy Solutions](#) is a global portfolio of cryogenic technology brands specializing in precision-engineered components and integrated systems for hydrogen, LNG, helium, and industrial gas applications. Serving energy, mobility, aerospace, and scientific markets, the business delivers safety-critical solutions backed by decades of manufacturing expertise, proven operational reliability, and dedicated Field Service teams supporting installation, commissioning, and performance in the field.

Clean Energy & Fueling



[OPW Vehicle Wash Solutions \(VWS\)](#) delivers a comprehensive portfolio of car wash equipment. With advanced point-of-sale technology from [Innovative Control Systems \(ICS\)](#) and high-performance equipment from [PDQ](#) and [Belanger](#), to trusted car wash chemicals from [Turtle Wax Pro](#), OPW VWS helps car wash operators meet diverse customer needs while driving operational efficiency and sustainable growth across global markets.

Clean Energy & Fueling



From touchless automatics to express tunnels, [OPW Vehicle Wash Solutions](#) enables car wash operators to optimize performance, enhance customer satisfaction and drive sustainable growth.



Imaging & Identification Segment

Leading the design and manufacture of equipment, consumables, and software, in addition to providing support services for the marking & coding, product traceability, brand protection, consumer engagement, and digital textile printing markets. [Click to Read More](#)



Operating Companies



markem·imaje

Building connected and safe supply chains through innovative marking and coding solutions seamlessly integrated with product identification and traceability software and services.



Developing effective printing solutions through innovative software, inks, and consumables, along with printing systems for the digital textile, soft signage, and specialty materials markets.

Imaging & Identification

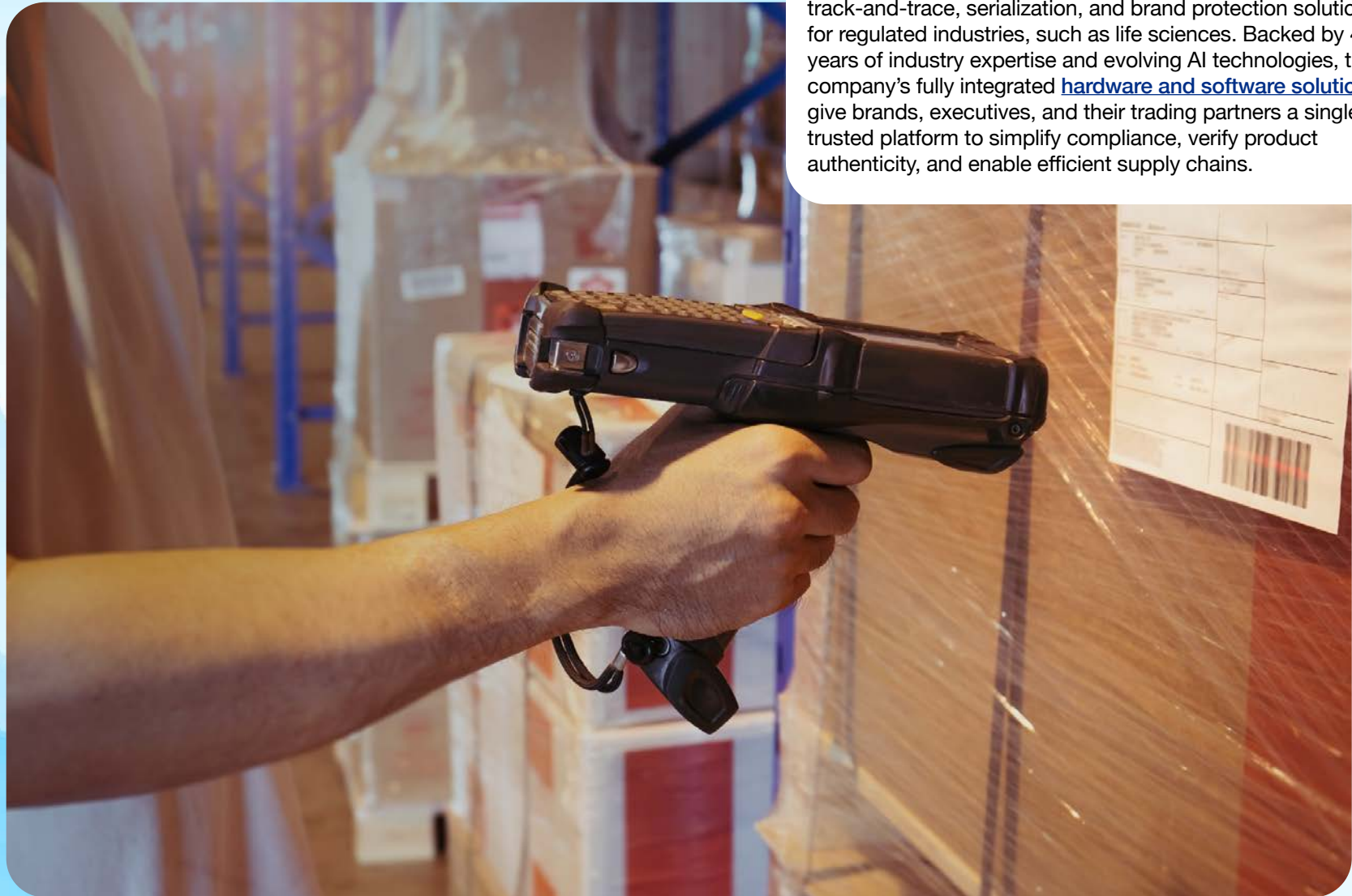


markem•imaje

Markem-Imaje, a leading global provider of end-to-end supply chain solutions and industrial marking and coding systems, delivers innovative product identification, packaging intelligence and connected product solutions and services, empowering leading brands and consumers with the right information across the supply chain. The **5940 G Touch Dry™ high-resolution inkjet coder** meets growing industry demands for sustaining high-resolution barcodes, branding, and text on corrugated packaging without incurring the high cost of labels.



Imaging & Identification



markem·imaje



connected solutions by Markem-Imaje®

Systemch, part of **Markem-Imaje**, is a leading provider of digital track-and-trace, serialization, and brand protection solutions for regulated industries, such as life sciences. Backed by 40 years of industry expertise and evolving AI technologies, the company's fully integrated **hardware and software solutions** give brands, executives, and their trading partners a single, trusted platform to simplify compliance, verify product authenticity, and enable efficient supply chains.

Imaging & Identification

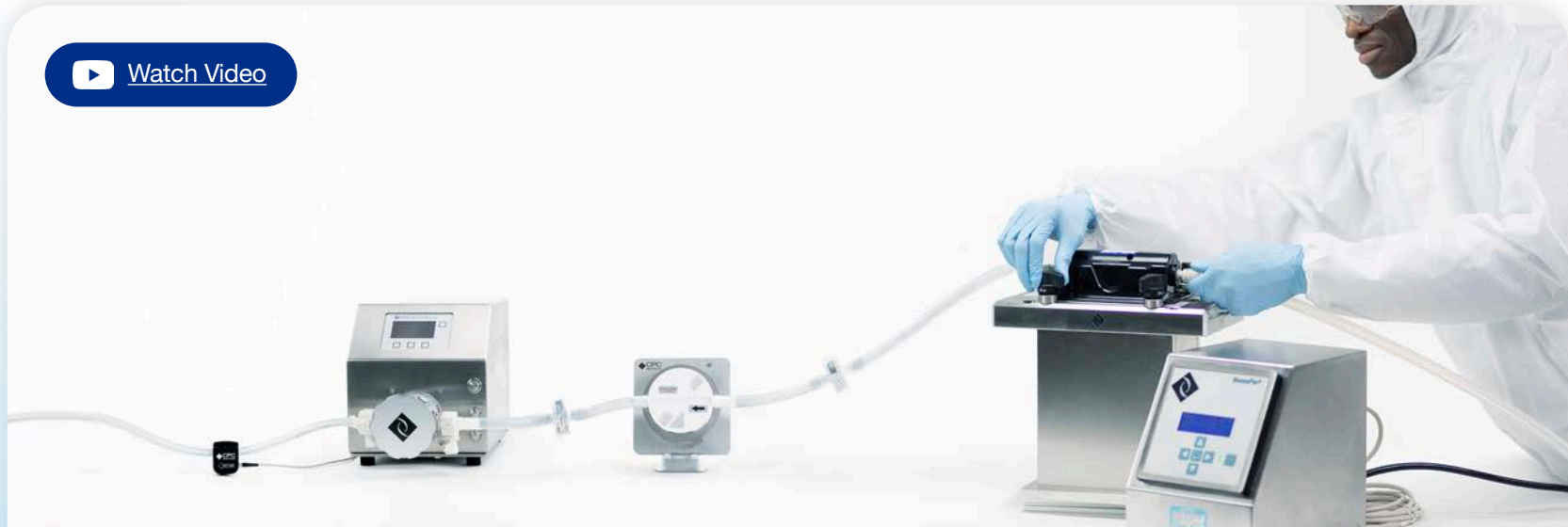


The **MP5000** by **MS Printing Solutions**, in combination with reactive, disperse, acid, or pigment inks from JK Group, redefines digital textile printing by empowering textile producers to achieve new levels of productivity and quality.

Pumps & Process Solutions Segment

Supplying performance-critical components and solutions for the safe handling of fluids across the chemical, bioproduction, hygienic, energy, and diversified industrial markets. [Click to Read More](#)

 Watch Video



Operating Companies



Providing connectors, quick disconnect couplings and fittings for life sciences, thermal management, and industrial applications.



Delivering performance-critical solutions for rotating and reciprocating machinery across the oil & gas, power generation, marine, industrial, chemical, and general processing markets.

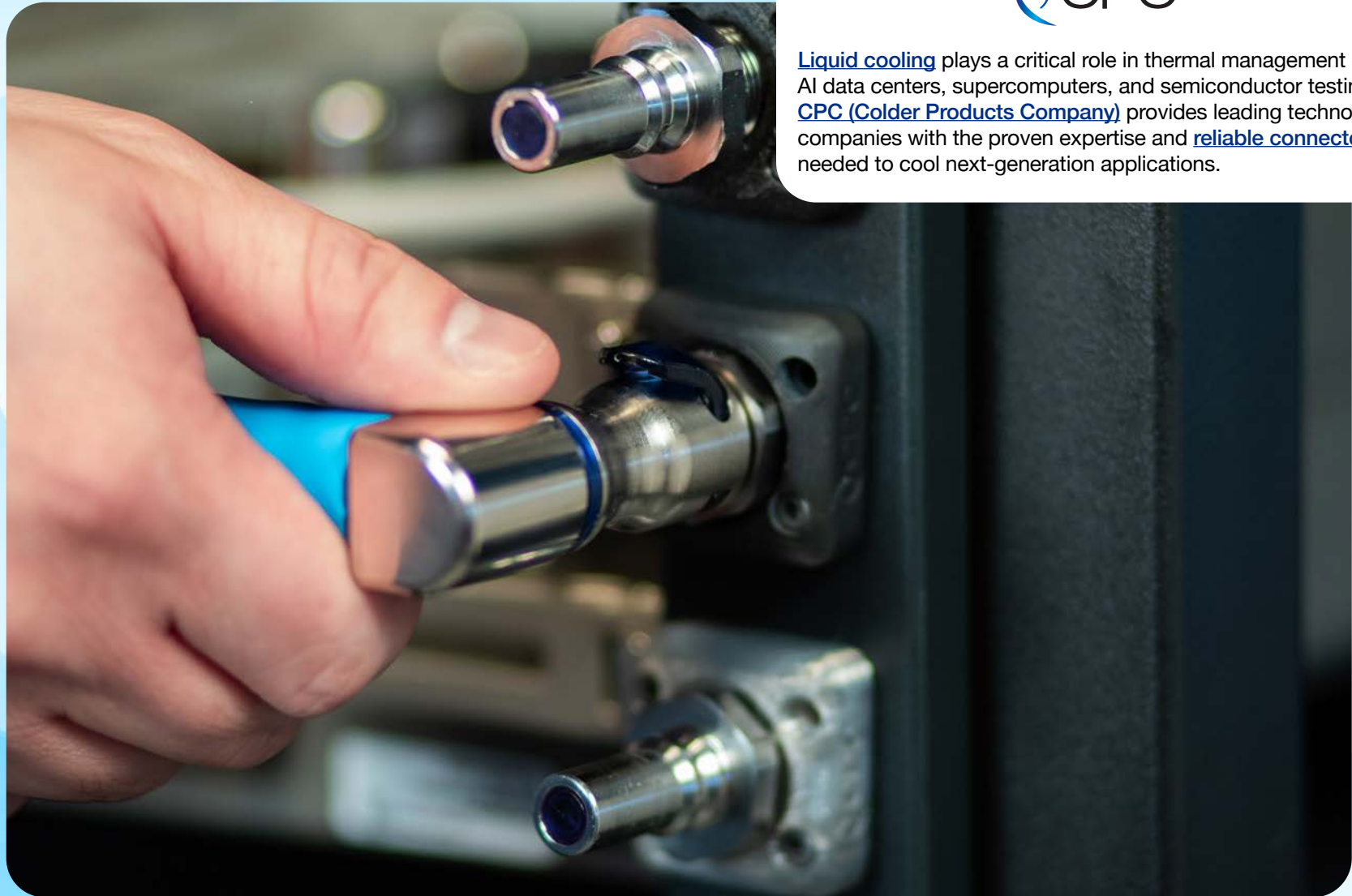


Developing and manufacturing integrated and customizable systems in process technology for the polymer, chemical, and petrochemical industries.



Enabling the safe and efficient transfer and measurement of critical, valuable fluids and materials that require optimal performance and peace-of-mind reliability in applications where it matters most.

Pumps & Process Solutions



Liquid cooling plays a critical role in thermal management of AI data centers, supercomputers, and semiconductor testing. CPC (Colder Products Company) provides leading technology companies with the proven expertise and reliable connectors needed to cool next-generation applications.

Pumps & Process Solutions



CPC's MicroCNX sterile connection technology is ideal for making fast, efficient sterile closed-system connections across cell therapy applications from wash to final fill and everywhere in between within the cell therapy manufacturing process. CPC's sterile connection technology is operator friendly, reduces the complexity of the connection process, and increases the overall consistency in a manufacturing environment.

Pumps & Process Solutions



Dover has a broad product and solutions offering that serves biotech partners with critical fluid transfer applications from lab-scale to full-scale manufacturing operations around the world. [CPC Biotech's Quattroflow four piston diaphragm pumps](#) and [SumoFlo Coriolis flow meters](#), along with [CPC AseptiQuik](#) and [MicroCNX connectors](#) are used in various single-use bioprocess applications.



Pumps & Process Solutions



Blackmer pumps, part of PSG, are used around the world onboard both military and commercial marine vessels, as well as by ground forces. Blackmer sliding vane and centrifugal pumps handle the transfer, circulation, stripping, loading and unloading of a variety of fluids in military applications.



Pumps & Process Solutions



DOVER
PRECISION
COMPONENTS

FW MURPHY
PRODUCTION CONTROLS

FW Murphy Production Controls, part of Dover Precision Components, provides critical control and protection functionality for compression skids. Our experienced service teams and monitoring technology deliver exceptional support, helping customers ensure reliable and efficient operations across natural gas production.

Pumps & Process Solutions



The [MAAG extraction pump](#) enables reliable polymer transfer in industrial processing environments. Designed for polymer production operations such as polyester, polyolefins, and polystyrene manufacturing, it helps maintain efficiency and continuity in demanding production conditions.

Pumps & Process Solutions



The [PURITY CONCEPT V](#) from [SIKORA](#), part of Dover's [MAAG operating unit](#), enables precise laboratory inspection and analysis of plastic pellets, flakes, and test plates. SIKORA is a leading provider of precision measurement, inspection, and control solutions for production processes in the wires and cables, hoses, tubes, sheets, optical fibers, and plastics industries.



Climate & Sustainability Technologies Segment

Developing and supplying innovative and energy-efficient equipment and systems serving the commercial refrigeration, heating & cooling, and beverage packaging equipment markets. [Click to Read More](#)



Operating Companies



Developing innovative and sustainable solutions for metal container manufacturers around the world.



Manufacturing commercial and industrial refrigeration systems, refrigerated display cases, and specialty products along with glass and freezer doors and lighting systems.

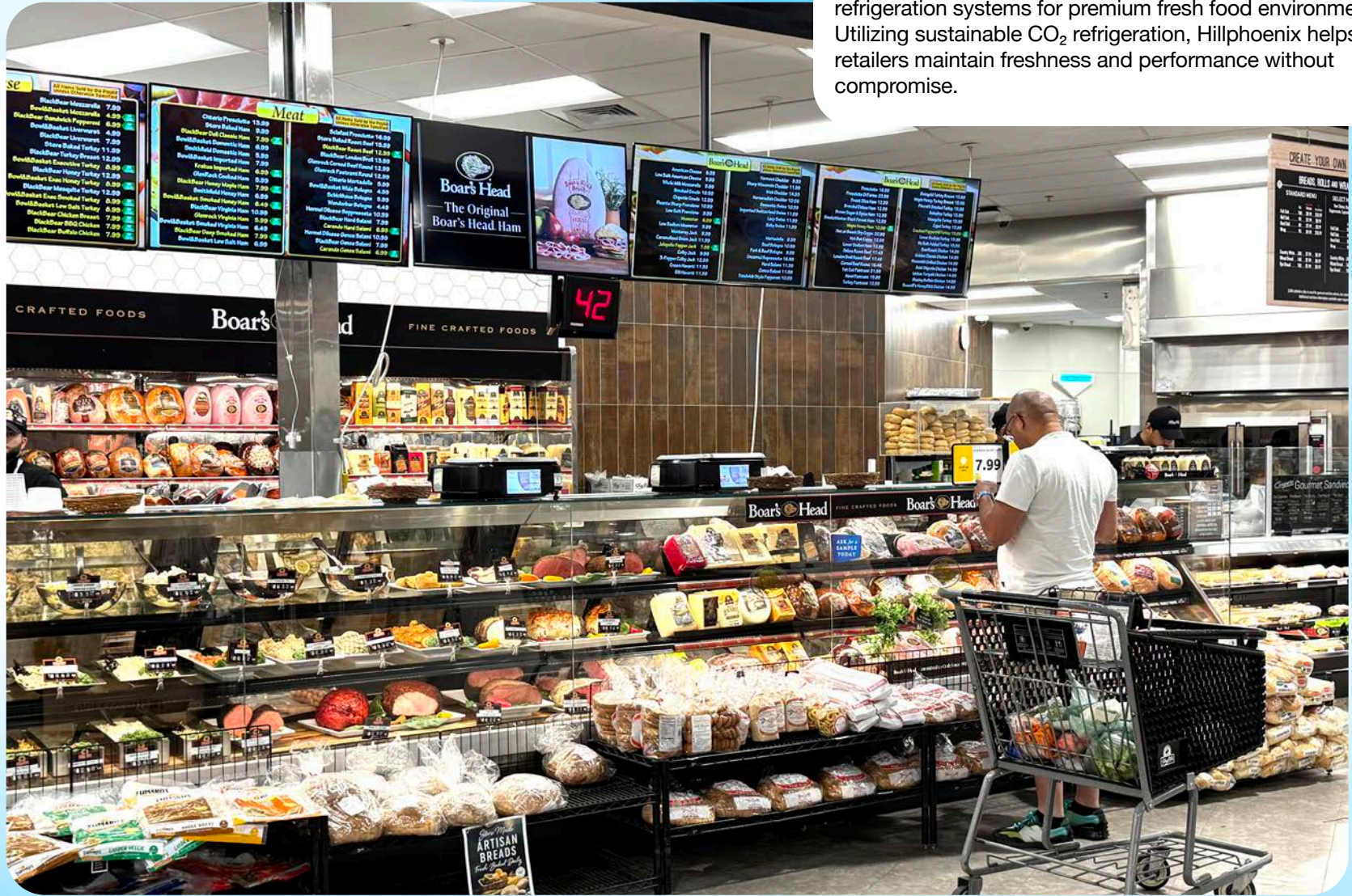


Designing and manufacturing brazed plate heat exchangers for HVAC, refrigeration, data centers, and other industrial markets.

Climate & Sustainability Technologies



Hillphoenix, part of [Dover Food Retail](#), provides innovative refrigeration systems for premium fresh food environments. Utilizing sustainable CO₂ refrigeration, Hillphoenix helps retailers maintain freshness and performance without compromise.



Climate & Sustainability Technologies

DOVER
FOOD RETAIL

Anthony[®]

[Anthony](#), part of [Dover Food Retail](#), provides merchandising solutions for commercial refrigeration, including glass doors, lighting systems, and display equipment that help improve merchandise visibility, accessibility, and the in-store shopping experience.



Climate & Sustainability Technologies



DOVER
FOOD RETAIL

ADVANSOR

Advansor, part of Dover's Climate & Sustainability Technologies segment, is a market-leading CO₂ climate solutions manufacturer, designing plug-and-play heat pumps and integrated indoor and outdoor systems for cooling, freezing, air conditioning, and heating in food retail and industrial markets.

Climate & Sustainability Technologies



SWEF

SWEF, a leading global supplier of brazed plate heat exchangers for industrial, commercial, and residential applications, is committed to offering state-of-the-art-heat transfer solutions to support development of heating and cooling systems that meet industry requirements for energy efficiency, sustainable operation, and use of natural refrigerants.

Climate & Sustainability Technologies



For over 60 years, [Belvac](#) has been a leading supplier of metal container manufacturing solutions. As a single-source solution provider, Belvac offers a [comprehensive range](#) of proven equipment and machinery for metal cans, bottles, food, and aerosol lines.



Optimizing Data Center Performance with Dover

SWEP

**Brazed
Plate Heat
Exchangers**



Proven solutions
engineered to address
AI data center
demands for scalable
liquid cooling and
power distribution

CPC

**In-Cabinet
Quick
Disconnects**



OPW

Vacuum Jacketed Piping



Cryogenic Components



Bulk Fluid Connectors



**Composite Covers for
Power Line Trenches**



Plastic Piping Systems



PSG

**Cryogenic
Centrifugal Pumps**



**Glycol
Centrifugal Pumps**





Since 1955 | Redefining what's possible

Dover Corporation
3005 Highland Parkway
Downers Grove, IL 60515

dovercorporation.com